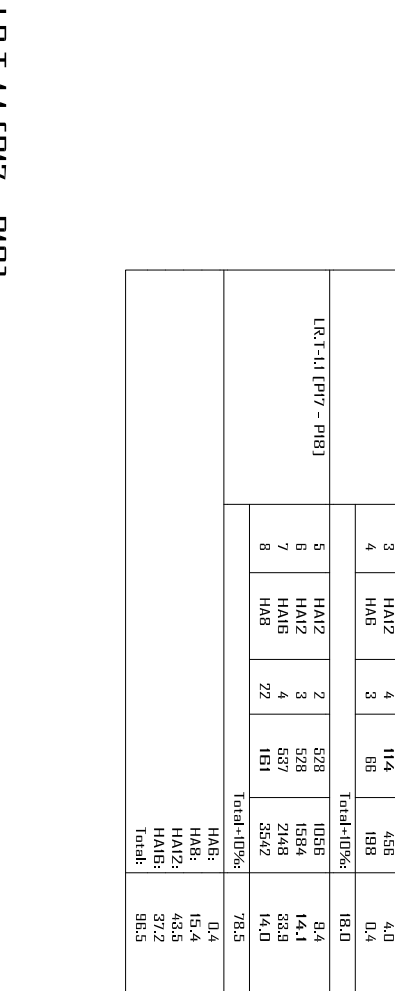
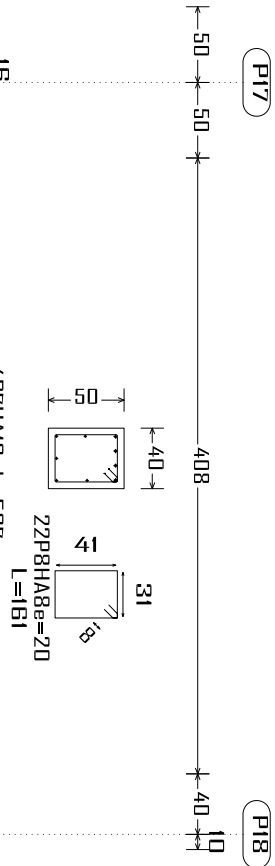


[illegible]

L.R.T-1.1 [P17 - P18]



Technical drawing of a window blind. The drawing shows a side view of the blind with a series of horizontal slats. The total length of the blind is indicated as 558. The width of the slats is indicated as 50. The drawing includes labels for the material and dimensions: ARM. PEAU 2XIP5HA12 L=528, 3P6HA12 L=528, and 12. The drawing also shows a detail of the slat connection at the bottom right.

Services sanitaires à Boromo et Dédougou

Plan de Ferrailage des semelles

Avant Projet Détaillé 14/07/2025

G5 ASSOCIATES
Customer Acquisition & Retention

Echelle : 1/100

Dr.-Ing. Césaire HEMA (IGC N°709)